

SPECIAL FINISHING

609B



mm. 1,2	Piano Tray Plateau Tablett oval Bandeja	cm. 40 x 36	15 3/4" x 14 1/8"
---------	---	-------------	-------------------

612B



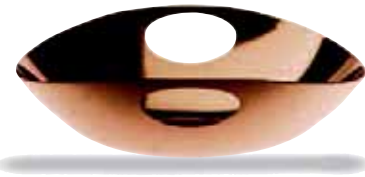
mm. 1,2	Piano forato Tray fretworked handles Plateau avec anses ajourée Grifftablett oval Bandeja asa perforada	cm. 40 x 36	15 3/4" x 14 1/8"
---------	---	-------------	-------------------

613B



mm. 1,2	Fondo Bowl Bol Schale oval Cuenco	cm. 22 x 20	8 5/8" x 7 7/8"
		cl. 100	oz. 33 7/8
		cm. 40 x 36	15 3/4" x 14 1/8"
		cl. 200	oz. 67 5/8

614B



mm. 1,2	Fondo forato Bowl fretworked handles Bol avec anses ajourée Griffschale oval Cuenco asa perforada	cm. 22 x 20	8 5/8" x 7 7/8"
		cl. 100	oz. 33 7/8
		cm. 40 x 36	15 3/4" x 14 1/8"
		cl. 200	oz. 67 5/8

617B



mm. 1,2	Sottopiatto ovale Charger oval Assiette de bienvenue ovale Platzteller oval Bajo plato oval	cm. 34 x 31	13 3/8" x 12 1/4"
---------	---	-------------	-------------------

630B



mm. 1,2	Antipastiera Hors d'oeuvre tray Plat à hors d'oeuvre Vorspeisenplatte Entremesera	cm. 34 x 31	13 3/8" x 12 1/4"
---------	---	-------------	-------------------

SPECIAL FINISHING

616B



mm. 1,2	Formaggera Parmesan cheese basin Fromagère Käsedose Quesera Azucarero	cm. 14 x 12 cl. 20	5 1/2" x 4 3/4" oz. 6 3/4
---------	---	-----------------------	------------------------------

615B



mm. 1,2	Completo olera e spargisale Cruet and salt cellar set Service huile-vinaigre Menage 4-tlg. Convoy vinagreras y saleros	H cm. 19,6 cm. 22x20 cl. 30 (x2) cl. 8 (x2)	H 7 3/4" 8 5/8" x 7 7/8" oz. 10 1/8 (x2) oz. 2 3/4 (x2)
---------	--	--	--

627B



mm. 1,2	Piano milleusi Multifunction tray Plateau oval multi usages Tablett mit Brett und 3 Porzellan Sossenschalen Bandeja oval multi usos	cm. 40 x 36	15 3/4" x 14 1/8"
---------	--	-------------	-------------------

350



Ampolla Cruet Huilliere Öl-/Essigflasche Vinagrera	H cm. 18 cl. 30 H 7 1/8" oz. 10 1/8	Salino Salt cellar Cristal pour sel et poivre Salz-Pfefferstreuer Salero	H cm. 8 cl. 8 H 3 1/8" oz. 2 3/4
--	--	---	---

616BAC



mm. 1,2	Piattino per pane Bread tray Plat pour pan Brot Platte Plato para pan	cm. 14 x 12	5 1/2" x 4 3/4"
---------	---	-------------	-----------------

61739B



mm. 1,2	Sottopiatto ovale magnum Charger oval Assiette de bienvenue ovale Platzteller oval Bajo plato oval	cm. 39 x 36	15 3/8" x 14 1/8"
---------	--	-------------	-------------------

SPECIAL FINISHING

910B



mm. 1,2 | Secchiello per spumante
Sparkling wine cooler
Seau à champagne
Wein- und Sektku"bler
Cubo para champany

H cm. 17,5 | H 7"
cm. 39 x 36 | 15 3/8" x 14 1/8"
lt. 7 | gal. 1 4/5

899B



mm. 1,2 | Secchiello per ghiaccio
Ice bucket
Seau à glaçons
Eiswu"rfleimer
Cubitera hielo

H cm. 11,5 | H 4 5/8"
cm. 22 x 20 | 8 3/8" x 7 7/8"
lt. 1,6 | oz. 54

912B



mm. 1,2 | Secchiello per spumante forato
Sparkling wine cooler fretworked handles
Seau à champagne anses ajourée
Wein- und Sektku"bler mit Griffen
Cubo para champany asa perforada

H cm. 17,5 | H 7"
cm. 39 x 36 | 15 3/8" x 14 1/8"
lt. 6 | gal. 1 3/5

909B



mm. 1,2 | Secchiello per ghiaccio forato
Ice bucket fretworked handles
Seau à glaçons anses ajourée
Eiswu"rfleimer mit Griffen
Cubitera hielo asa perforada

H cm. 11,5 | H 4 5/8"
cm. 22 x 20 | 8 3/8" x 7 7/8"
lt. 1,2 | oz. 40 1/2

ACCIAIO

p. 221



609	612
613	614
617	630

p. 222

616	615
627	
616AC	61739

p. 223

910	899
912	909

ICE ORO

p. 221



	101
	102
110	106

p. 222

105	104
113	
117	11039

p. 223

120	118
121	119

ORO NERO

p. 221



	101N
	102N
110N	106N

p. 222

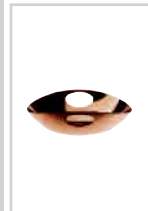
105N	104N
113N	
117N	11039N

p. 223

120N	118N
121N	119N

BRONZO

p. 221



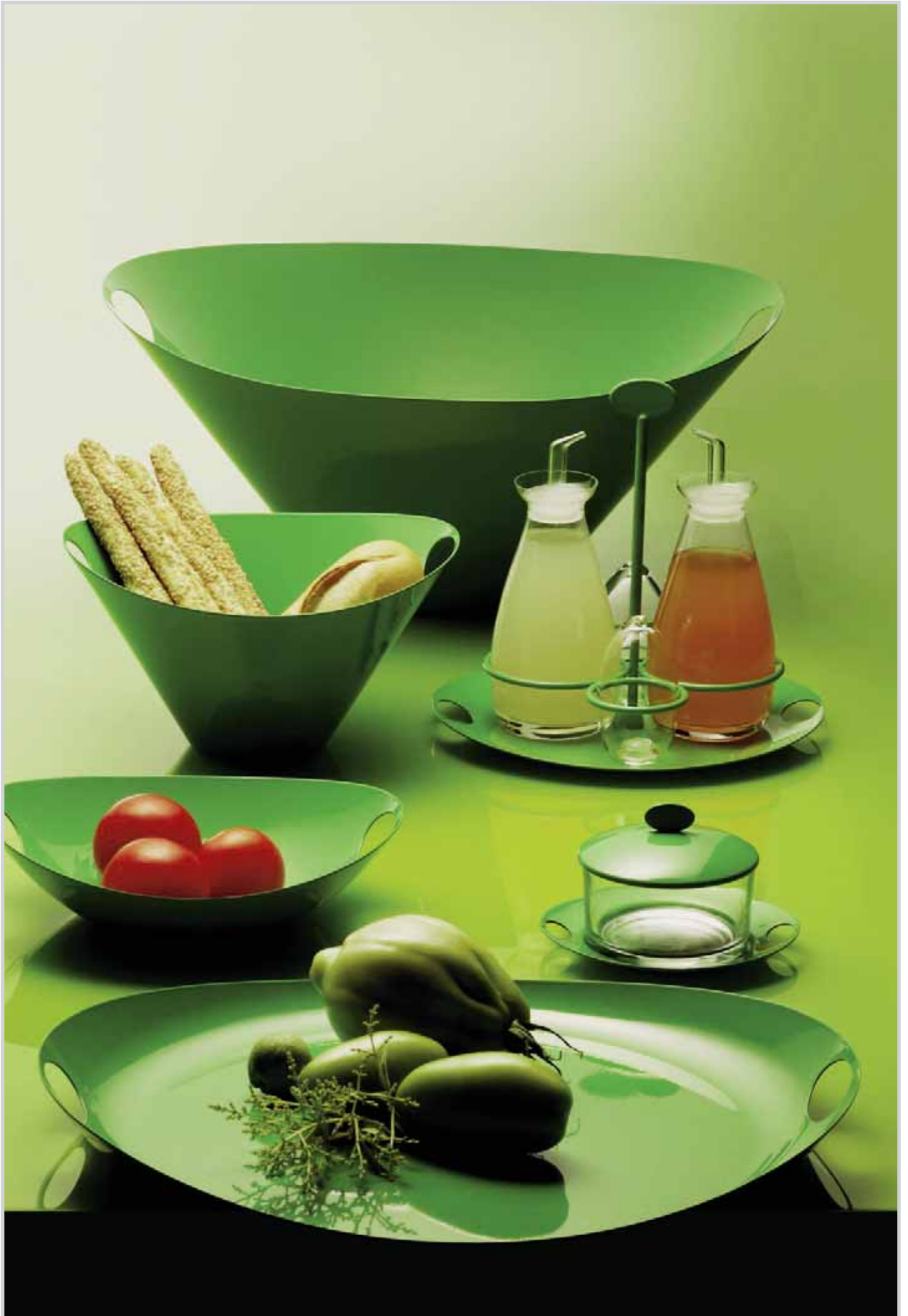
609B	612B
613B	614B
617B	630B

p. 222

616B	615B
627B	
616 BAC	61739B

p. 223

910B	899B
912B	909B



SPECIAL FINISHING

1001



mm. 1,2	Piano forato Tray fretworked handles Plateau avec anses ajourée Grifftablett oval Bandeja asa perforada	cm. 40 x 36	15 3/4" x 14 1/8"
---------	---	-------------	-------------------

1002



mm. 1,2	Cestino/Portafrutta Bowl/Fruit holder Bol/Compotier Griffschale/Obstschale Cuenco/Fruterо	cm. 22 x 20 cl. 100	8 5/8" x 7 7/8" oz. 33 7/8
		cm. 40 x 36 cl. 200	15 3/4" x 14 1/8" oz. 67 5/8

1003



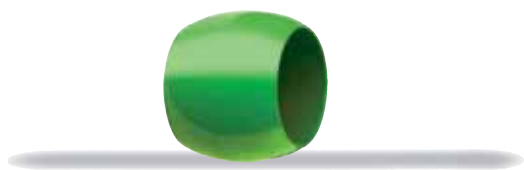
mm. 1,2	Sottopiatto Charger Assiette de bienvenue Platzteller Bajo plato	cm. 34 x 31	13 3/8" x 12 1/4"
---------	--	-------------	-------------------

1004



mm. 1,2	Sottobottiglia Bottle coaster Dessous de bouteille Flaschenuntersatz Posabotella	cm. 14 x 12	5 1/2" x 4 3/4"
---------	--	-------------	-----------------

1005



mm. 1,2	Allacciatovaglioli Napkins ring Rond de serviette Serviettenring Servilletero	Ø cm. 6	Ø 2 3/8"
---------	---	---------	----------

SPECIAL FINISHING

1010



mm. 1,2 | Centrotavola grande
Big Centerpiece
Grand Centre de table
Grosse Tafelaufsatz
Centro de mesa grande

H cm. 17,5 | H 7"
cm. 39 x 36 | 15 3/8" x 14 1/4"
lt. 6 | gal. 1 3/8

1009



mm. 1,2 | Centrotavola piccolo
Small Centerpiece
Petit Centre de table
Kleine Tafelaufsatz
Centro de mesa pequeño

H cm. 11,5 | H 4 5/8"
cm. 22 x 20 | 8 3/4" x 7 7/8"
lt. 1,2 | oz. 40 1/2

1006



mm. 1,2 | Completo oliera e spargisale
Cruet and salt cellar set
Service huile-vinaigre
Menage 4-tlg.
Convoy vinagreras y saleros

H cm. 19,6 | H 7 3/4"
cm. 22x20 | 8 5/8" x 7 7/8"
cl. 30 (x2) | oz. 10 1/8 (x2)
cl. 8 (x2) | oz. 2 3/4 (x2)

1007



mm. 1,2 | Formaggera
Parmesan cheese basin
Fromagère
Käsedose
Quesera Azucarero

cm. 14 x 12 | 5 1/2" x 4 3/4"
cl. 20 | oz. 6 3/4

1008



mm. 1,2 | Antipastiera
Hors d'oeuvre tray
Plat à hors d'oeuvre
Vorspeisenplatte
Entremesera

cm. 34 x 31 | 13 3/8" x 12 1/4"



J Girasole
Sunflower
Tournesol
Sonnengelb
Girasol



F7 Carota
Carrot
Carotte
Mohrrübe
Zanahoria



S7 Rosso
Red
Rouge
Signalrot
Rojo



A7 Mela verde
Apple green
Vert pomme
Apfelgrün
Verde Manzana



V7 Viola
Violet
Violet
Pflaume
Violeta



C Cobalto
Cobalt
Cobalt
Kobalt
Cobalto

Acciaio verniciato con resina epossidica
Epoxy resin-coated steel
Acier recouvert de époxy-résine
Stahl mit Epoxy-Lackierung
Acero con recubrimiento epoxi



Possibilità di abbinare le posate FANTASIA a pagina 243, nelle stesse tonalità
You can couple the cutlery FANTASIA of page 243, matching the same color tonality of this collection.

Vous pouvez coupler les couverts FANTASIA à la page 243, correspondant le même couleur de cette collection.

Die Farbtöne des Bestecks Fantasia (Seite 243) lassen sich mit den Farbtönen dieser Kollektion kombinieren.

Se puede acoplar los cubiertos FANTASIA en la página 243, igualando el mismo color de esta colección.

